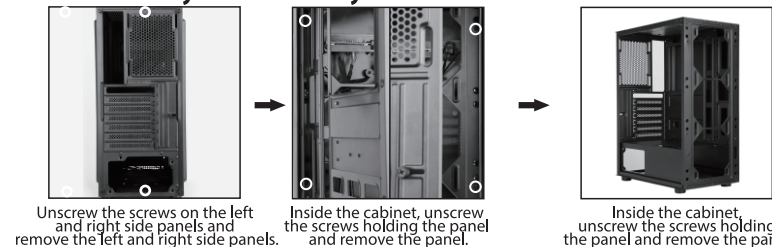


210mm

# EVOLVEO® Xenon

VERSION / DATE EN  
II. / 15. 8. 2025

## Disassembly and assembly



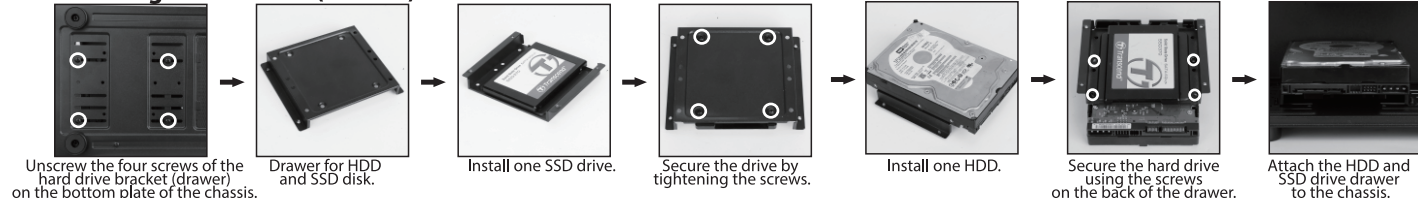
Unscrew the screws on the left and right side panels and remove the left and right side panels. Inside the cabinet, unscrew the screws holding the panel and remove the panel. Inside the cabinet, unscrew the screws holding the panel and remove the panel.

## Installing the motherboard



Insert the I/O shield into the appropriate hole on the back of the chassis. Place the base plate on the spacers. Place the motherboard on the standoffs in the cabinet and screw it in place using the included screws.

## Installing a hard drive (drawer)



Unscrew the four screws of the hard drive bracket (drawer) on the bottom plate of the chassis. Drawer for HDD and SSD disk. Install one SSD drive. Secure the drive by tightening the screws. Install one HDD. Secure the hard drive using the screws on the back of the drawer. Attach the HDD and SSD drive drawer to the chassis.

## Installing the HDD into the bay



Installing the hard drive into the bay next to the power supply. Place the hard disk drive (HDD) into the mounting space. Secure the hard drive screws.

## Installing the power supply



Place the power supply in the dedicated compartment. Insert the power supply from the right side of the chassis so that it is aligned with the mounting hole. Attach the power supply with the hex screw from the outside of the rear panel of the chassis.

## Installing a hard drive



Insert the SSD into the appropriate slot in the enclosure. Align the mounting holes. Tighten the screws to secure the SSD to the chassis.

## Installing the rear panel fan



Place the fan on the back panel. Attach the 120mm fan to the designated location. Secure the fan by tightening all screws.

148mm

# EVOLVEO® Xenon

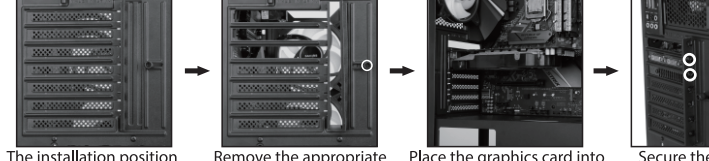
## Mounting the fan to the front panel of the case



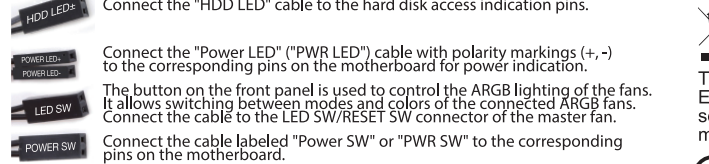
Place the fans on the front panel. Install 2x120mm fans on the front panel. Tighten the fan screws.

Note: The front panel of Armor V5 and Armor V6 can be equipped with three 12CM cooling fans.

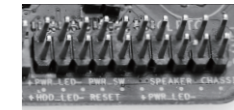
## Installing the graphics card (horizontal position)



The installation position of the graphics card is in the PCIe slot on the rear of the case. Remove the appropriate number of PCI covers according to the width of the graphics card. Place the graphics card into the PCIe slot and secure it. Secure the graphics card by tightening the hex screws.



Connect the "HDD LED" cable to the hard disk access indication pins. Connect the "Power LED" ("PWR LED") cable with polarity markings (+, -) to the corresponding pins on the motherboard for power indication. The button on the front panel is used to control the ARGB lighting of the fans. It allows switching between modes and colors of the connected ARGB fans. Connect the cable to the LED SW/RESET SW connector of the master fan. Connect the cable labeled "Power SW" or "PWR SW" to the corresponding pins on the motherboard.

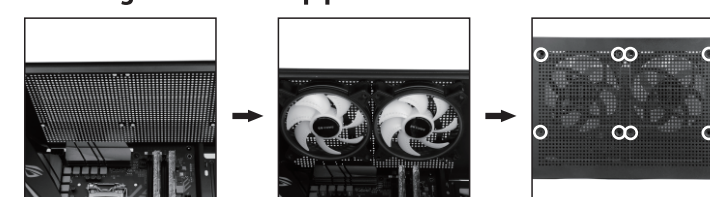


Note: positive to positive, negative to negative, never connect them in reverse

## Accessories

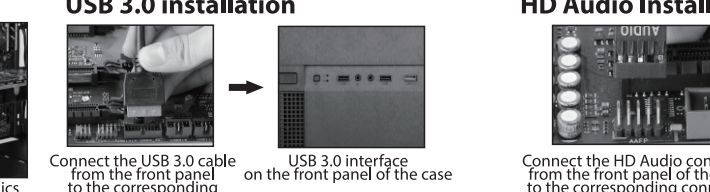
3	6	8	17

## Installing fans on the top panel



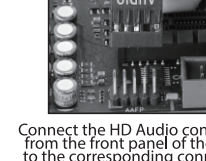
Place the top fans in the designated location. Attach two 120mm fans to the top panel. Secure the fan by tightening the screws.

## USB 3.0 installation



Connect the USB 3.0 cable from the front panel to the corresponding connector on the motherboard. USB 3.0 interface on the front panel of the case. Connect the HD Audio connector from the front panel of the case to the corresponding connector on the motherboard.

## HD Audio Installation



Connect the HD Audio connector from the front panel of the case to the corresponding connector on the motherboard.



The crossed-out wheeled bin symbol on your product, literature or packaging means that within the European Union all electrical and electronic products, batteries and accumulators must be taken to separate collection at the end of their working life. Do not dispose of these products as unsorted municipal waste.



Hereby, Abacus Electric, s.r.o. declares that the EVOLVEO Xenon is in compliance with the essential requirements of Directive 2014/53/EC. The full text of the Declaration of Conformity can be downloaded from <http://ftp.evolveo.com/ce/>

Importer / Manufacturer  
Abacus Electric, s.r.o.  
Planá 2, 370 01, Czech Republic  
Email: [helpdesk@evolveo.com](mailto:helpdesk@evolveo.com)

Made in P.R.C.

Copyright © 2025 Abacus Electric, s.r.o.  
All rights reserved. Appearance and specifications are subject to change without notice. Printing errors reserved.